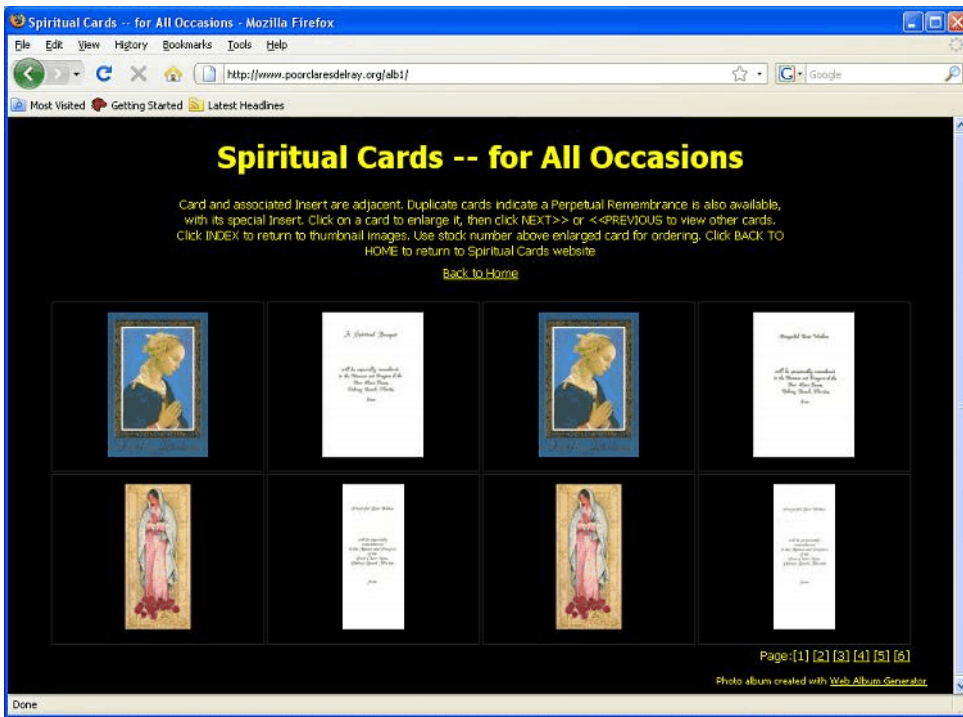


Help Pages Printouts, page 1

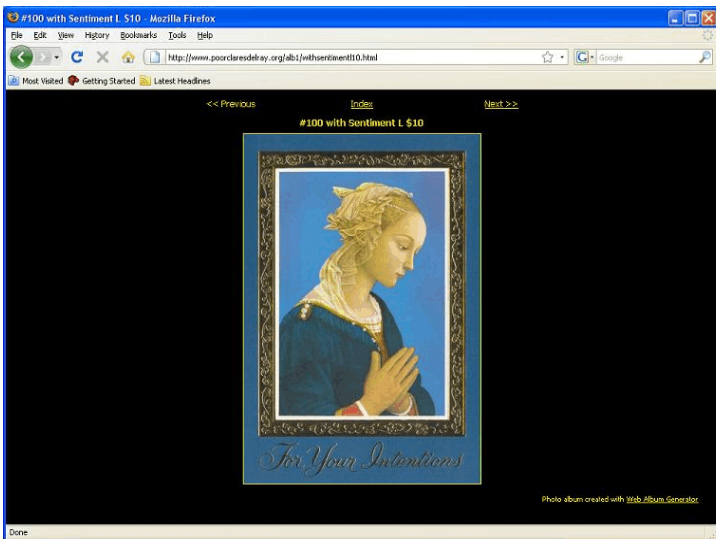
(Scroll to bottom of pg 2 to see how to print and return to website)



This is the Card Album thumbnail view. It allows you to peruse the pages quickly, but without much detail. (Choose pages at lower right.)

When you find a card you may be interested in, click on it and you'll get an enlarged, more detailed view of it.

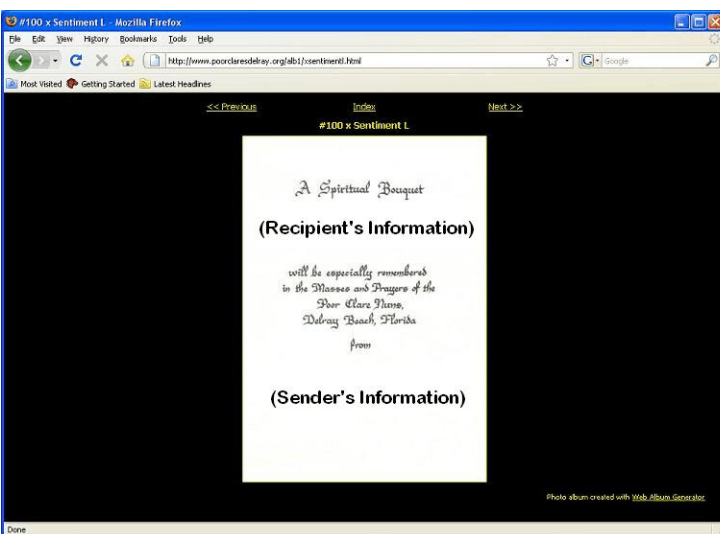
To return to the Spiritual Card website from here, click on "Back to Home".



This is a card shown in enlarged view. If this is the card you want, please jot down the card stock number and suggested donation listed above the card.

Clicking Next>> will show you the Sentiment that comes with this card, also in enlarged view. Continue clicking Next>> to see more cards in enlarged view.

Clicking <<Previous will show you enlarged views of previous cards. Clicking Index will return you to the thumbnail views.



This is a card Sentiment in enlarged view. Clicking Next>> or <<Previous will show you the next or previous enlarged view. (Usually the Sentiment follows its associated card.) Clicking Index will return you to thumbnail views.

Note: Recipient's Information may be the name only, or it may also include a special Intention, such as "For your Graduation, John Brown", or perhaps "On your 25th Anniversary, John and Mary Smith"

Note: Sender's Information may be your name only, or it may be in the form of "Grandmother Jones", or "Your Loving Wife, Edna".

Help Pages Printouts, page 2

The screenshot shows a Mozilla Firefox browser window with the address bar displaying <http://www.poorclaresdelray.net/cardform.pdf>. The browser's menu bar includes File, Edit, View, History, Bookmarks, Tools, and Help. The toolbar shows various navigation and utility icons, including a search bar with the text 'Find'. The main content area displays a PDF form titled 'Cardform' with the following sections:

Person Ordering

Name : _____ Ph No : ____ - ____ - ____

Street Address : _____

City : _____ State : ____ Zip : _____

Email : _____ @ _____ Mail card to Recipient (x) ____ OR
Mail to me in double envelope (x) ____

Card Information	Mailing Information (only if card is to be mailed to Recipient)
Card : # _____ Donation : \$ _____	Mail to Name : _____
For * : _____	Street : _____

When this PDF form is displayed on your screen, you can print it out on your printer by clicking on "File", then "Print". Note: Before you print, you may have to set up the page by clicking on "File", then "Page Setup". Select "Portrait", and "Shrink to fit Page".

You may also save a copy of the form on your computer for future use by clicking on "File", then "Save a Copy".

When you are done, you can return to the Spiritual Card website by clicking on your browser's 'back' button, "<".